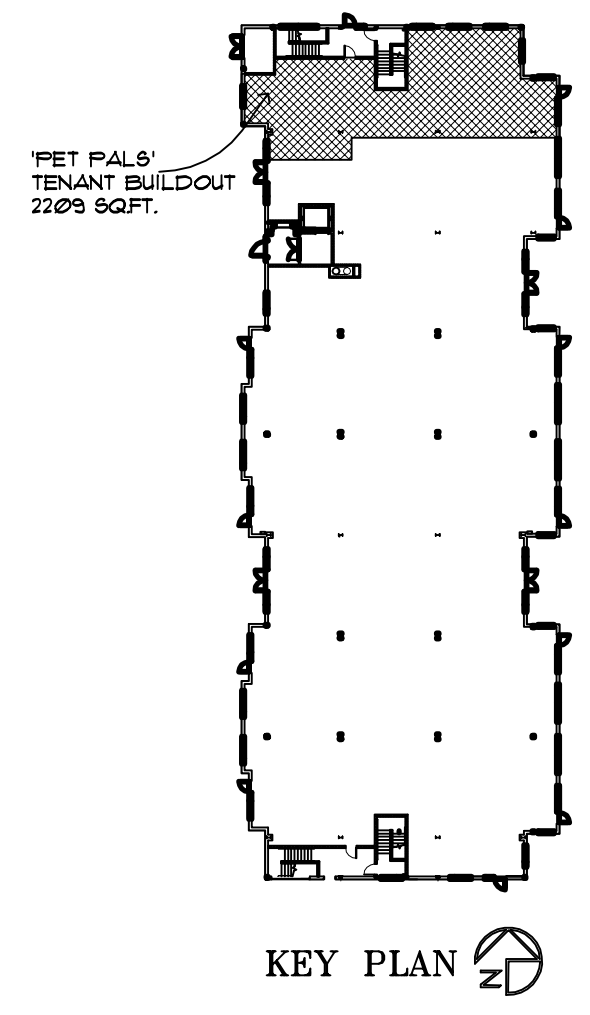
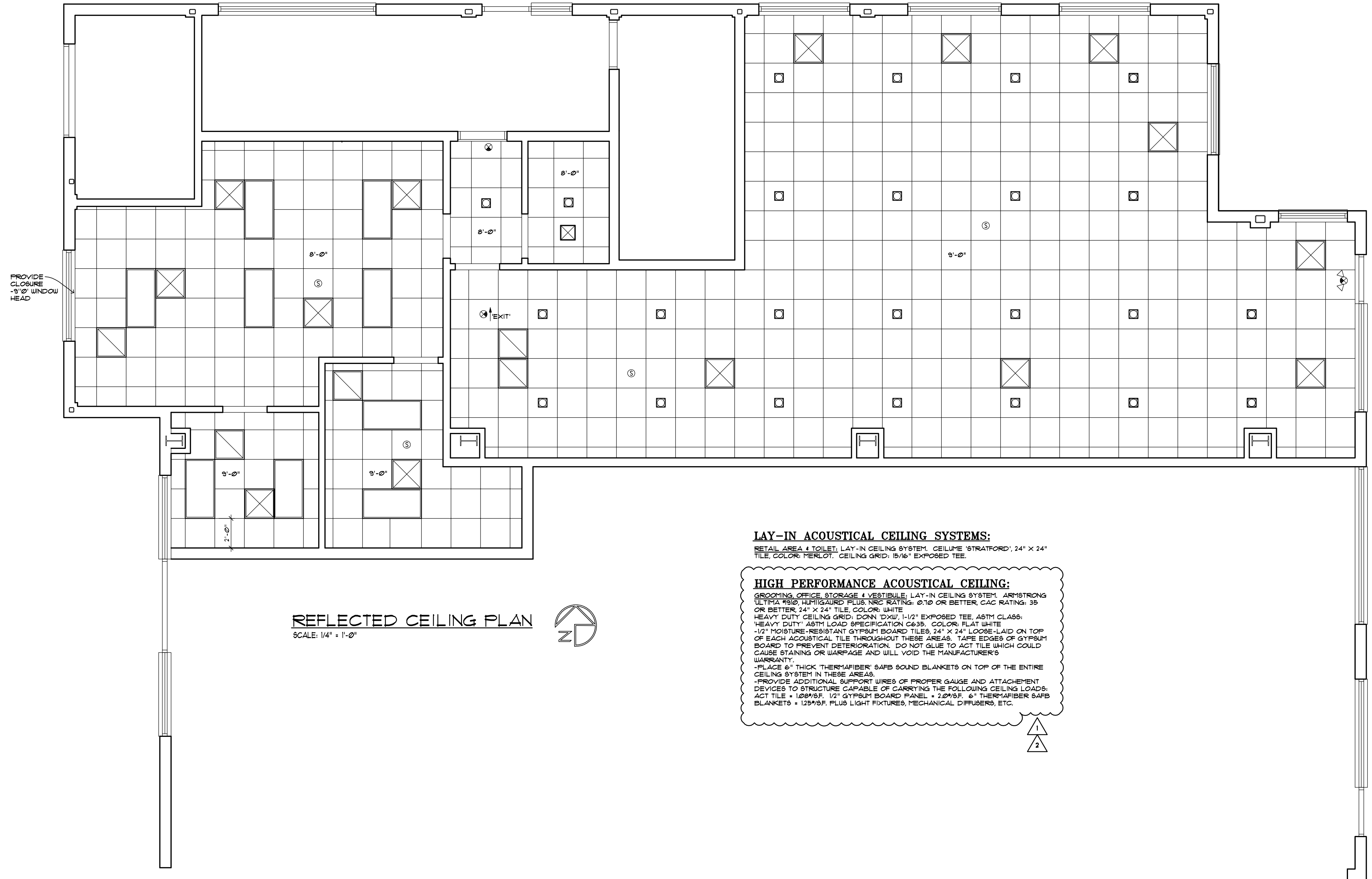


Pet Pals Tenant Buildout
 Dodson Place Building 8, Geneva, Illinois



CEILING LEGEND	
SYMBOL	DESCRIPTION
	2'x4' LAY-IN FLUOR. FIXTURE W/ HEAVY DUTY ACRYLIC LENS
	RECESSED CAN FIXTURE
	EXIT LIGHTS (BATTERY BACKUP)
	COMBINATION EXIT/EMERGENCY (BATTERY BACKUP)
	SUPPLY AIR DIFFUSER
	RETURN AIR GRILLE
	SMOKE DETECTOR



REFLECTED CEILING PLAN
 SCALE: 1/4" = 1'-0"

LAY-IN ACOUSTICAL CEILING SYSTEMS:
 RETAIL AREA 4 TOILET, LAY-IN CEILING SYSTEM, CELLINE 'STRATFORD', 24" x 24"
 TILE, COLOR: MERLOT, CEILING GRID: 15/16" EXPOSED TEE.

HIGH PERFORMANCE ACOUSTICAL CEILING:
 GROOMING OFFICE STORAGE 4 VESTIBULE, LAY-IN CEILING SYSTEM, ARMSTRONG
 ULTIMA #910 HUMIDIGUARD PLUS, NRC RATING: 0.70 OR BETTER, CAC RATING: 35
 OR BETTER, 24" x 24" TILE, COLOR: WHITE
 HEAVY DUTY CEILING GRID, DOWN EXPOSED 1/2" EXPOSED TEE, ASTM CLASS:
 'HEAVY DUTY' ASTM LOAD SPECIFICATION C635, COLOR: FLAT WHITE
 1/2" MOISTURE-RESISTANT GYPSUM BOARD TILES, 24" x 24", LAYED ON TOP
 OF EACH ACOUSTICAL TILE THROUGHOUT THESE AREAS. TAPE EDGES OF GYPSUM
 BOARD TO PREVENT DETERIORATION. DO NOT GLUE TO ACT TILE WHICH COULD
 CAUSE STAINING OR WARPAGE AND WILL VOID THE MANUFACTURER'S
 WARRANTY.
 -PLACE 6" THICK THERMABER® SABS SOUND BLANKETS ON TOP OF THE ENTIRE
 CEILING SYSTEM IN THESE AREAS.
 -PROVIDE ADDITIONAL SUPPORT WIRES OF PROPER GAUGE AND ATTACHMENT
 DEVICES TO STRUCTURE CAPABLE OF CARRYING THE FOLLOWING CEILING LOADS:
 ACT TILE = 120#/SF, 1/2" GYPSUM BOARD PANEL = 22#/SF, 6" THERMABER SABS
 BLANKETS = 125#/SF, PLUS LIGHT FIXTURES, MECHANICAL DIFFUSERS, ETC.

Revisions

	ADDENDUM #1 3-18-2010
	ADDENDUM #2 3-23-2010

© COPYRIGHT 2010 BY TIM O'MALLEY, ARCHITECTS
 ALL RIGHTS RESERVED

Plotted: APRIL 6, 2010
Issue Date: MARCH 16, 2010
Drawn: O'MALLEY
Job No: